

April 2009 CMSA Newsletter



CMSA Madison Area Chapter

Case Management Society of America, Madison Area Chapter

CMSA - a non-profit multi-disciplinary society of health care professionals engaged in case management.

Join us on
April 23, 2009



Rheumatoid Arthritis

Speaker: Alan Bridges, MD
Rheumatology
Chief of Staff VA,
Professor of Medicine - UW

Sponsored by: Bristol-Myers Squibb



1.0 contact hours

Meeting Fees

Members—No Charge

Non Members— Invited to join us at a charge of \$15.

Members of CMSA are not required to be Certified Case Managers.

For more information on joining CMSA, please contact our Secretary, Brenda Bartz via e-mail at bbartz@mhsjvl.org

Location:

Comfort Inn of Madison 5:30 – 7:00 pm
4822 East Washington Ave.
Madison, WI 53704
608-244-6265
Dinner begins at 5:30 in the Madison Room

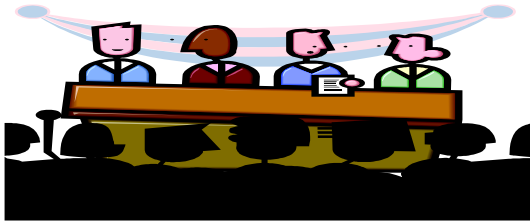
Please RSVP by 4-17-09 to Victoria Krohn
at victoria.krohn@uwmf.wisc.edu
or call 608-821-4905



From I-90/94, exit Highway 151 south (exit 135A), turn right at first frontage entrance.

Please note: If you are attending in place of someone who is a designated member under a Company/Corporate account, please note this in your RSVP and when checking in. Thank you!

Your CMSA Board Members:



Officers

Sue Meudt, President

sue.meudt@pplusic.com

Jodi Atwell, Past President

jatwell@uwhealth.org

Marlene Roewer, President-elect

marlene.roewer@deancare.com

Brenda Bartz, Secretary

bbartz@mhsjvl.org

Vicki Krohn, Treasurer

victoria.krohn@uwmf.wisc.edu

Board Members

Wendy Countryman

wcountryman@weatrust.com

Martha Nelsen

martha@hddesign.com

Kathy Shurts

kathy.shurts@deancare.com

Linda Viney

lviney@mhsjvl.org

Volunteers

Nancy Nie

nancynie@chorus.net

CMSA - Madison Chapter

P.O. Box 5175

Madison WI 53705-0175

Upcoming Events

May 28, 2009

Topic: Women's Health

Speaker:

Sponsor: Matria/Alere Women
& Children's Health

Location: Comfort Inn, Madison

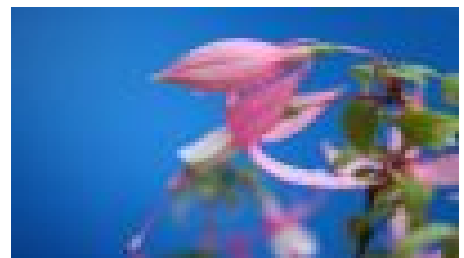
June 25, 2009

Topic: Electrotherapy

Speaker: Brian Thiry

Sponsor: RS Medical

Location: Comfort Inn, Madison



Keep going. There is more
on page 3!

Share the Wealth!

The Madison Area CMSA offers a unique opportunity for area care managers to gather for a meal, share ideas, attend educational programs, obtain continuing education credits and more.

We would like to share these opportunities with others! If you have coworkers or know of other individuals who might be interested in the Madison Area CMSA, please invite them to a CMSA meeting.



In addition, please feel free to forward the Madison CMSA newsletter to any potential new members.

Share Your Expertise!

The Madison Area CMSA is comprised of individuals from health care facilities, private clinics, educational institutions, insurance companies, and more. We invite you to *Share Your Expertise!* through the CMSA newsletter.

Each month, we would like to feature a brief article written by one of the CMSA members. If you would be willing to share your knowledge or experience with the member's of our chapter, or let us know about upcoming educational opportunities, please contact Wendy Countryman at wcountryman@weatrust.com.

We have a volunteer to share their expertise in the May newsletter. Can you help us by sharing your expertise in the June newsletter.