

## March 2010 CMSA Newsletter

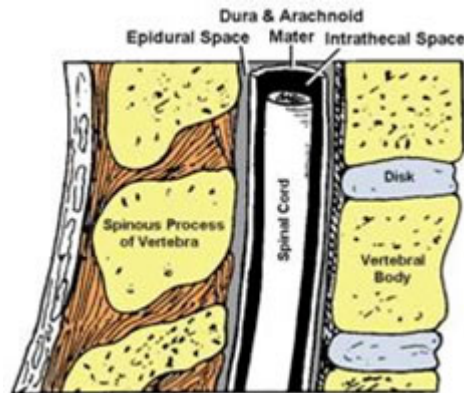


CMSA Madison Area Chapter  
[www.cmsamadisonwi.com](http://www.cmsamadisonwi.com)

### Case Management Society of America, Madison Area Chapter

CMSA – a non-profit multi-disciplinary society of health care professionals engaged in case management.

Join us on  
**March 25, 2010**



**Topic:** Intrathecal Baclofen and Spasticity  
**Speaker:** John Rhode McGuire, MD  
**Time:** 5:30 PM

**Sponsored by Medtronic, Inc.**  
**Approved for 1.0 CCM Credit**



**Medtronic**

Location:

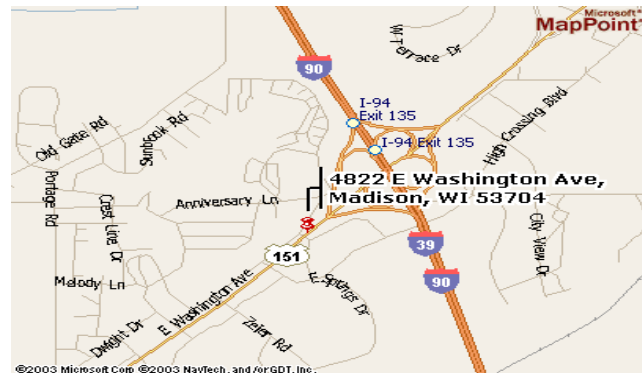
**Comfort Inn of Madison 5:30 – 7:00 pm**  
4822 East Washington Ave.  
Madison, WI 53704  
608-244-6265

- ✓ Check-in at 5:15 PM
- ✓ Dinner begins at 5:30 in the Madison Room

**Please RSVP by March 19, 2010**

Registration is online:

<http://www.cmsamadisonwi.com/MeetingSchedule.htm>



From I-90/94, exit Highway 151 south (exit 135A),  
turn right at first frontage entrance.

CMSA Members are not required to be Certified Case Managers.

**Meeting Fees**  
**Madison Chapter CMSA Members—No Charge**

**Non-members - \$15**

*Please note you may be required to show your CMSA membership card with WI3 Chapter listed for admission to Madison CMSA Programs.*

**For more information on joining CMSA:** <http://www.cmsa.org/Individual/Membership/WhyJoin/tabid/166/Default.aspx>

## Upcoming Events

April 22, 2009  
Fibromyalgia  
Sponsor: Pfizer

May 20, 2010  
Weight Loss Surgery

## Message from the President – March 2010

Dear CMSA Madison Chapter members:

It is an honor to serve as the new president of CMSA Madison. I look forward to guiding the chapter during the next year and helping to maintain a strong professional network for case managers in the Madison area.

Please take a few minutes to familiarize yourself with our CMSA Madison website. We have added a few new features, including the ability to register for monthly educational programs online. Please encourage other case managers in your work place to log into the site as well. If you have any questions for members of the board, use the email address on the website, [info@cmsamadisonwi.com](mailto:info@cmsamadisonwi.com).

Your elected CMSA Madison officers and board members are working on goals for the coming year. Number one goal will be to maintain, and hopefully build membership to keep the chapter successful. Each and every one of you plays an important role in this goal. Here are some ways we can all promote CMSA:

- Attend every program offered by the chapter this year for CEUs and networking
- Encourage your coworkers to attend the chapter's monthly programs with you
- Join or maintain your CMSA membership as an individual or encourage your employer to purchase a company membership
- Use the national CMSA website for resources that can enhance your case management skills
- Incorporate CMSA Standard's of Practice into your case management programs

If each of us works at promoting our profession, the CMSA Madison chapter will continue to thrive and grow.

Sincerely,

Marlene Roewer RN BS CCM  
President, CMSA Madison Chapter

Your CMSA Board Members:



### **Officers**

Marlene Roewer, President  
Sue Meudt, Past President  
Terri Donati, President-Elect  
Brenda Bartz, Secretary  
Jennie Watson, Treasurer

[marlene.roewer@deancare.com](mailto:marlene.roewer@deancare.com)  
[sue.meudt@pplusic.com](mailto:sue.meudt@pplusic.com)  
[tdonati@ghcscw.com](mailto:tdonati@ghcscw.com)  
[bbartz@mhsjvl.org](mailto:bbartz@mhsjvl.org)  
[jenniesw@sbcglobal.net](mailto:jenniesw@sbcglobal.net)

### **Board of Directors**

Linda Viney  
Jan Wierschke  
Naomi Witter

[lviney@mhsjvl.org](mailto:lviney@mhsjvl.org)  
[janice.wierschke@deancare.com](mailto:janice.wierschke@deancare.com)  
[naomi.witter@pplusic.com](mailto:naomi.witter@pplusic.com)

### **Volunteers**

Nancy Nie:

[nancynie@chorus.net](mailto:nancynie@chorus.net)

CMSA – Madison Chapter  
P.O. Box 5175  
Madison WI 53705-0175