

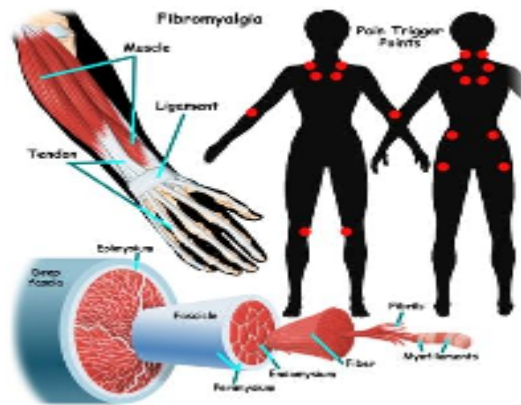
## April 2010 CMSA Newsletter



**CMSA Madison Area Chapter**

**Case Management Society of America, Madison Area Chapter**

CMSA – a non-profit multi-disciplinary society of health care professionals engaged in case management.



**April 22, 2010**

**Topic:** Fibromyalgia: Disease Overview, Diagnosis and Management  
**Speaker:** Connie R. Ecklund, MS, APNP, CPNP  
**Time:** 5:30 PM

**Sponsored by Pfizer**  
**Approved for 1.0 CCM Credit**



**Location:**

**Comfort Inn of Madison 5:30 – 7:00 pm**  
4822 East Washington Ave.  
Madison, WI 53704  
608-244-6265

- ✓ Check-in at 5:15 PM
- ✓ Dinner begins at 5:30 in the Madison Room

**Please RSVP by April 16, 2010**

Registration is online:

<http://www.cmsamadisonwi.com/MeetingSchedule.htm>



From I-90/94, exit Highway 151 south (exit 135A),  
turn right at first frontage entrance.

CMSA Members are not required to be Certified Case Managers.

### Meeting Fees

**Madison Chapter CMSA Members—No Charge**

**Non-members - \$15**

*Please note you may be required to show your CMSA membership card with W13 Chapter listed for admission to Madison CMSA Programs.*

**For more information on joining CMSA:** <http://www.cmsa.org/Individual/Membership/WhyJoin/tabid/166/Default.aspx>

### Upcoming Events

May 20, 2010  
Weight Loss Surgery

June 24, 2010  
Autism

(No meetings: July/August)

### CMSA Updated Standards of Practice (SOP)

Last month CMSA released the updated Standards of Practice:

<http://www.cmsa.org/Individual/MemberToolkit/StandardsofPractice/tabid/69/Default.aspx> and then more recently

CCMC (Commission for Case Manager Certification) made its concerns public:

[http://www.ccmcertification.org/pdfs/2010-03-SOP\\_Letter\\_to\\_Certificants.pdf](http://www.ccmcertification.org/pdfs/2010-03-SOP_Letter_to_Certificants.pdf). Become informed and educated about this topic. We wanted to make you aware of what is in the news.

## Your CMSA Board Members:



### Officers

Marlene Roewer, President  
Sue Meudt, Past President  
Terri Donati, President-Elect  
Brenda Bartz, Secretary  
Jennie Watson, Treasurer

[marlene.roewer@deancare.com](mailto:marlene.roewer@deancare.com)  
[sue.meudt@pplusic.com](mailto:sue.meudt@pplusic.com)  
[tdonati@ghcscw.com](mailto:tdonati@ghcscw.com)  
[bbartz@mhsjvl.org](mailto:bbartz@mhsjvl.org)  
[jenniesw@sbcglobal.net](mailto:jenniesw@sbcglobal.net)

### Board of Directors

Jodi Atwell  
Linda Viney  
Jan Wierschke  
Naomi Witter

[jatwell@uwhealth.org](mailto:jatwell@uwhealth.org)  
[lviney@mhsjvl.org](mailto:lviney@mhsjvl.org)  
[janice.wierschke@deancare.com](mailto:janice.wierschke@deancare.com)  
[naomi.witter@pplusic.com](mailto:naomi.witter@pplusic.com)

### Volunteers

Nancy Nie:  
Kathy Shurts

[nancynie@chorus.net](mailto:nancynie@chorus.net)  
[kashurts@mailbag.com](mailto:kashurts@mailbag.com)

CMSA – Madison Chapter  
P.O. Box 5175  
Madison WI 53705-0175  
[www.cmsamadisonwi.com](http://www.cmsamadisonwi.com)

### Website Security

We strive to protect your data from unauthorized access. All security measures at the site are derived from the idea that the person who creates a form and solicits data for that form is the ultimate owner of the data. We will never give out any data collected from your form without your permission. Furthermore, we will not give out your name or any identifying information about specific users to any third party. Nor will we use any email address you provide for any third-party solicitations without your permission. Subject to court order, we will release any information as required by law.

<http://www.formsite.com/privacy.html>